



Puerto Rico
Science, Technology
& Research Trust



Puerto Rico is a globally recognized innovati hub

Who We Are

We are a non-profit organization created in 2004 to encourage participation, job creation, investment and financing of research & development and technology.



Puerto Rico
Science, Technology
& Research Trust

Mission



We invest, facilitate, and build capacity to continually advance Puerto Rico's economy and its citizens' well-being through innovation-driven enterprises, science, technology, and public health.



Vision

Puerto Rico is a globally recognized innovation hub.

Core values



Integrity | Be a facilitator | Desire to Innovate |
Entrepreneur Spirit | Optimism | Respect | Collaboration |
Be a Facilitator | Accountability | Leadership - Adaptability
| Customer-Centric | Accomplishments & Results |
Commitment | Ethical use of AI



Eng. Luz A. Crespo
CEO

TO OUR COLLABORATORS

Greeting and welcome to the Puerto Rico Science, Technology and Research Trust, a private nonprofit organization created by law in 2004, to encourage and promote the innovation, transfer and commercialization of technology and creation of jobs in the technology sector.

Our esteemed Board of Trustees, management team, associates and partners demonstrate unwavering creativity, innovation, and commitment. Together, we are diligently working towards continuing to position Puerto Rico as a distinguished global innovation hub.

Thank you for collaboration as we collectively strive for excellence in advancing technology, research, and the economic landscape of Puerto Rico.



BOARD OF TRUSTEES



Alfredo Casta



Daniel Colón Ramos, Ph.D



Edith Pérez, MD



Esther Alegría, Ph.D



Felix Negrón



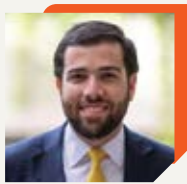
Frances Santiago-Schwartz, Ph.D.



Gualberto Medina



Michael Caligiuri, MD



Sebastián Negrón



Ubaldo Córdova, Ph.D



Ángel Soto

Our Board is composed of distinguished professionals who support and oversee our work and provide guidance to ensure that the Trust is managed within its mission and vision.



Puerto Rico
Science, Technology
& Research Trust



EXECUTIVE TEAM



Gilberto Márquez
Chief Financial Officer
gmarquez@prsciencetrust.org



Lupe Vázquez
Chief Marketing &
Communications Officer
lvazquez@prsciencetrust.org



Doira Díaz, Esq.
General Counsel & Administrator
ddiaz@prsciencetrust.org



César Piovanetti
Chief Information Officer
cpiovanetti@prsciencetrust.org



Inés Álvarez De La Campa
Human Resources Director
ialvarez@prsciencetrust.org



Eng. Luis Nieves, PE, PMB,
Chief Facilities Management Officer
lnieves@prsciencetrust.org

COMPLIANCE TEAM

Our organization enforces a compliance culture to enable success.



Sylvia López Jorge, CPA
Chief Compliance Officer



Mitzy González, Ph.D
HIPAA Compliance Officer

STRATEGIC PILLARS & PROGRAMS



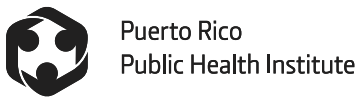
RESEARCH & DEVELOPMENT



ENTREPRENEURSHIP



PUBLIC HEALTH



EDUCATION





KEY PROGRAMS

PROGRAM DIRECTORS



RESEARCH & DEVELOPMENT



David L. Gulley, PhD, RTTP, CLP.
Program Director
dgulley@prsciencetrust.org

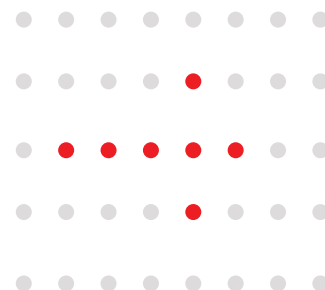
The Technology Transfer Office™ mission is to identify, evaluate, protect, market, and transfer the most promising research discoveries from Puerto Rico’s universities, institutions, and research institutes to the private sector for commercialization and to benefit the public. The program’s vision is to implement shared risk/shared reward partnerships that deliver best-in-class technology transfer services to identify and increase innovation opportunities for Puerto Rico’s scientists and researchers, thereby improving Puerto Rico’s overall innovation ranking.

Dr. Gulley’s distinguished career spans nearly 30 years in spearheading technology-based economic development. For 25 years, he provided strategic leadership to the University of Illinois system and its Chicago Campus, holding roles as Associate Vice President and Assistant Vice Chancellor. In these capacities, he led academic-industry collaborations, directed technology transfer efforts, managed incubation programs, and initiated research park endeavors.

From 2012 to 2015, Dr. Gulley played a pivotal role in establishing 20 technology transfer offices at universities in Chile. His educational background includes undergraduate and graduate degrees from Southern Illinois University and Virginia Tech. Furthermore, he holds the esteemed titles of Certified Licensing Professional (CPL) and Registered Technology Transfer Professional (RTTP).



Provides a structured, systematic, open, and competitive funding mechanism to support the development of science, technology, and research projects in Puerto Rico. The mission of the Research Grants Program is to provide proof-of-concept funding and incentives to advance locally developed R&D projects to become more competitive for federal and private funding and/or commercialization. It represents a critical source of competitive financial support that builds the knowledge economy, fuels innovation, and empowers Puerto Rican scientists and entrepreneurs.



RESEARCH & DEVELOPMENT



CENTER FOR TROPICAL BIODIVERSITY

Established in 2015, our program directs the conservation and exploration of Puerto Rico's distinctive geography for scientific, societal, and economic benefits. The Center focuses on developing searchable collections of biological specimens, conserving biodiversity resources, and commercializing products derived from biodiversity. Despite a century-long tradition of scientific research in Puerto Rico centered on its unique environment, a coordinated local policy has been absent to guide these efforts, often driven by individual researchers' curiosity in various universities. The program aims to foster a unified and strategic approach to maximize our collective scientific endeavors with biodiversity.



Abel Baerga, Ph.D
Program Director
abaerga@prsciencetrust.org

Dr. Baerga serves as the Acting Director of the Puerto Rico Center for Tropical Biodiversity and Bioprospecting and holds the position of Associate Professor of Biochemistry at UPR-MSC. In this role, he conducts graduate courses on protein structure and enzymology while overseeing a research group engaged in funded projects related to enzyme discovery/evolution and the development of production methods for HIV glycoproteins as vaccines.

His educational journey includes a BA in Chemistry from UPR, a PhD in Chemistry and Biochemistry from the University of California, San Diego. Additionally, Dr. Baerga was a Royal Society Postdoctoral Fellow at the University of Cambridge, United Kingdom.



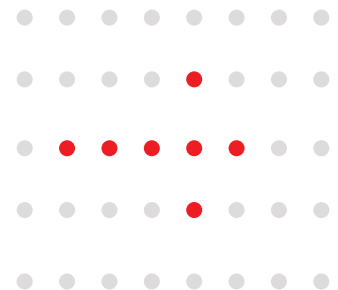
RESEARCH INSTITUTE

The Research Institute is committed to fostering a collaborative and diverse research community by supporting innovative basic and applied research into the fundamental biological mechanisms underlying diseases that disproportionately impact our population. It focusses on developing potential therapies and interventions that can significantly reduce or eliminate health disparities across Puerto Rico. It also encourages investigations into a wide range of diseases associated with significant morbidity and mortality in Puerto Rico and accelerates biomedical research.



Marcos López, Ph.D
Program Director
Mlopez@prsciencetrust.org

Dr. Lopez, a skilled biochemist and molecular biologist from Humacao, Puerto Rico, holds key roles as the founding director of the Research Institute at the Puerto Rico Science, Technology, and Research Trust, research manager at the Puerto Rico Public Health Trust, and assistant professor of Chemistry at the University of Puerto Rico at Humacao. Leading the Puerto Rico COVID-19 Variant Surveillance Initiative, he focuses on genomic surveillance for the Puerto Rico Department of Health. With a BS in Industrial Chemistry and a Ph.D. in Biochemistry, Dr. Lopez's impactful journey includes postdoctoral work at the Medical College of Wisconsin, where he conducted groundbreaking research in molecular biophysics and cancer biology. His prolific contributions to science include over 40 publications and seven issued patents, highlighting his pioneering work in cancer biology, mitochondrial metabolism, and redox cell regulation. Currently, as an investigator in the National Cancer Institute's Serological Sciences Network, he's unraveling COVID-19 immune responses. Dr. Lopez's expertise extends to editorial boards, NIH study sections, and advisory roles for various organizations.



PROGRAM DIRECTORS

ENTREPRENEURSHIP



Fase1 is a business incubator that aims to make entrepreneurship more accessible to Puerto Rican talent. With no entry barriers, it provides universal access to entrepreneurship education and incubates ideas that can transform into successful startups. Through our educational efforts, we envision the growth of an inclusive and diverse entrepreneurial community to address the island's needs in an innovative way, thus propelling the country's economy.



Colmena66 facilitates entrepreneurship in Puerto Rico by connecting entrepreneurs with the right resource at the right time so that they can start or grow a successful business in Puerto Rico. It analyzes the gaps in the ecosystem and works together with the members of the Business Support Network to strengthen the community. As ecosystem builders, Colmena66 creates an infrastructure to support people by providing ecosystem access points for anyone to participate, grow and rebuild.

parallel¹⁸

Parallel18 is a top-level, performance-driven international startup program with a social mission: offering entrepreneurs from all over the world and underrepresented groups access to high-quality business training, funding, and networks. We help them scale globally while working to position Puerto Rico as a unique hub for innovative businesses and technology through three main curriculums: pre18, p18 and Xpand.

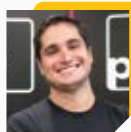


Bárbara Rivera Chinae
Executive Director
brivera@prsciencetrust.org

Bárbara Rivera-Chinae is the Director of Fase1 and Colmena66, two of the main programs of the entrepreneurship pillar of the Puerto Rico Science, Technology, and Research Trust. Previously, she served as Director of Agricultural Recovery and Re-Grow Urban and Rural Agriculture—both programs designed to strengthen Puerto Rico's food security by providing financial support and training for the restoration and creation of new agricultural enterprises to expand food production on the island. All of these programs, led by the Trust in collaboration with external partners, have been designed within a broader framework of the island's economic recovery.

Before joining the Trust in 2018, Bárbara worked for more than 15 years in economic development at the Puerto Rico Industrial Development Company (PRIDCO), now the Department of Economic Development and Commerce (DDEC), specifically within the Federal Contracting Center—also a federally funded program. During her tenure, she built her professional career in federal contracting, business development, and program administration, supporting the growth and strengthening of many Puerto Rican small businesses.

Additionally, Bárbara has participated in multiple economic initiatives, such as federal-sector trade missions and the establishment and management of industrial clusters, including the Puerto Rico IT Cluster, among others. Bárbara Rivera-Chinae holds a Bachelor's Degree in Business Administration with a concentration in Marketing from the University of Puerto Rico, Río Piedras Campus, as well as the Entrepreneurship Center Management certification from the International Business Innovation Association (InBIA) and the Advanced Entrepreneurial Mentoring Program from the Thunderbird School of Global Management in collaboration with Echar pa'Lante.



Héctor Jirau, Ph.D
Executive Director
hector@parallel18.com

Dr. Héctor Jirau holds a B.S. in Cell & Molecular Biology, an M.S. in Financial Engineering, and a Ph.D. in Biochemistry. He has been nominated and received numerous awards and recognition from federal institutions, holding a fellowship grant from the National Institute of Health (NIH) for four consecutive years. Dr. Jirau worked as a financial advisor at a state-registered investment advisory firm offering separately managed accounts services in healthcare. He has served as an Associate at Unity Growth Fund, a private equity firm, leading their investor relations and investment due diligence efforts for their Pre-IPO and early-stage investments in highly vetted companies like SpaceX, Thrasio, Stripe and Klarna. He also served as the investment fund manager, Director of Operations, and Investments and today as the Executive Director of parallel18, a renowned global startup accelerator. Dr. Jirau holds ownership in early-stage companies in different sectors and maintains active participation in numerous ventures in the healthcare sector.

PROGRAM DIRECTORS

PUBLIC HEALTH



Puerto Rico
Public Health Institute

The PRPHT, established in 2019, serves as a public health institute for Puerto Rico with the purpose of promoting innovative, evidence-based public health practices to achieve systematic health improvements, increase access to health programs, and reduce inequities in the communities of Puerto Rico.



Marianyoly Ortiz, Ph.D
Executive Director
mortiz@prsciencetrust.org

Dr. Marianyoly Ortiz-Ortiz serves as the Executive Director of the P.R. Public Health Trust, spearheading evidence-based public health initiatives in Puerto Rico. Her prior roles include serving as the Associate Director for the P.R. Vector Control Unit, where she supervised entomology labs, surveillance systems, and educational campaigns. Dr. Ortiz brings extensive experience in grant management and has actively collaborated in programs like the Center of Biodiversity and PR Innovation Meet-ups. A dedicated professional, she is an active member of the Puerto Rico Society for Microbiology and holds a position on the Board of Directors for the American Association for the Advancement of Science, Caribbean Division. Dr. Ortiz earned her bachelor's degree in microbiology from the University of Puerto Rico and holds a Doctorate in Environmental Sciences and Microbiology from the University of Arizona.



Puerto Rico Vector
Control Unit

The Vector Control Unit is a program established to leverage Puerto Rico's capacity to control the Aedes Aegyptis mosquito, the vector of dengue, Zika, Chikungunya, and Yellow Fever.



Julianne Miranda Bermúdez, Ph.D
Executive Director
gbrown@prvcu.org

Dr. Miranda Bermúdez is a public health professional with over a decade of experience working with institutions such as the University of Puerto Rico, the Centers for Disease Control and Prevention (CDC) during Puerto Rico's Zika response, and the Puerto Rico Vector Control Unit. She completed her academic training at the University of Puerto Rico, earning bachelor's, master's, and doctoral degrees in Public Health with a concentration in Environmental Health, and is currently an adjunct professor at the Graduate School of Public Health, Medical Sciences Campus.

With nine years at the Vector Control Unit, Dr. Bermúdez has held leadership roles spanning community outreach, project management, and Associate Director, and now serves as Director. In this role, she oversees the Unit's monitoring and surveillance, vector control, and community mobilization efforts, as well as international collaborations in El Salvador and Peru, advancing public health and community resilience.



Puerto Rico Consortium for Clinical Investigation
CLINICAL RESEARCH SOLUTIONS

Established in April 2016, PRCCI is a not-for-profit consortium of top academic and private research sites. The Consortium enhances clinical research speed and quality by driving performance and efficiencies across our sites, leveraging strategic partnerships, and establishing world-class capabilities.



Amarilys Silva, DPharm.
Executive Director
Amarilys.silva@prcci.org

Dr. Silva is a distinguished leader in the pharmaceutical industry, boasting a robust career in Clinical Research, Medical Affairs, Pharmacovigilance, Outcomes Research, Compliance, and Regulatory Affairs. With a track record spanning over twenty-six (26) countries across five (5) global regions, she has successfully led cross-functional teams in various therapeutic areas, including, but not limited to, Neurosciences, Diabetes, Oncology, Immunology, Endocrinology, and Neurodegenerative Vaccines. She brings extensive experience in managing regulatory inspections from both US and international agencies, coupled with a strong background in managerial roles. Her multifaceted expertise positions her as a seasoned professional with a global perspective in the pharmaceutical landscape.

PROGRAM DIRECTORS

EDUCATION



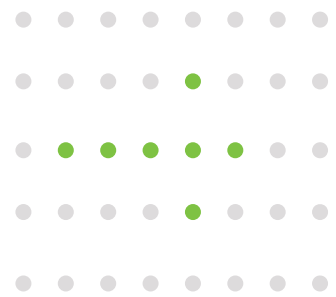
STEM EDUCATION & WORKFORCE DEVELOPMENT

The program is focused on improving K-12 STEM education and developing skills in emerging technologies. It aims to promote technology literacy from an early age and ensure a smooth transition from education to employment. The ultimate objective is to enable Puerto Rico's active involvement in the global tech economy.



Luis Nieves
Program Director
lnieves@prsciencetrust.org

Luis A. Nieves holds both a Bachelor of Science and a Master of Engineering in Industrial Engineering from the University of Puerto Rico, Mayagüez Campus (RUM). He is a certified Project Management Professional (PMP) and a licensed engineer in Puerto Rico. With over 30 years of experience in the electronics manufacturing and medical device industries, Luis has led initiatives in new product introduction, supply chain optimization, project management, strategic sourcing, and business development. He currently serves as Director of STEM Education & Workforce Development and Facilities Director at the Trust.





Puerto Rico
Science, Technology
& Research Trust



RESEARCH & DEVELOPMENT





EMPODERAMOS A CIENTÍFICOS E INVESTIGADORES

PARA LLEVAR LA ECONOMÍA DEL CONOCIMIENTO DE PUERTO RICO A EL NIVEL MÁS ALTO DE EXCELENCIA

QUÉ HACEMOS

El Programa de Subvenciones para Investigación es una fuente estructurada, sistemática y abierta de mecanismos de financiamiento competitivos que apoya el desarrollo de proyectos de investigación de ciencia y tecnología en Puerto Rico.

NUESTRO TRABAJO

162
 subvenciones de
 investigación otorgadas

\$17M
 millones en
 inversión total

\$70M
 millones en retorno
 de inversión

El resultado es una economía del conocimiento sólida impulsada por la innovación multisectorial, que beneficia a los científicos y empresarios puertorriqueños.

MECANISMOS DE FINANCIAMIENTO

EXPANDIMOS LA CAPACIDAD DEL ECOSISTEMA DE INVESTIGACIÓN Y DESARROLLO DE PUERTO RICO.



ADVANCED RESEARCH
GRANTS PROGRAM

Subvenciones de hasta
\$150k

Mecanismo de financiamiento para el avance de proyectos locales de ciencia y tecnología hacia fuentes alternas de financiamiento y/o comercialización.

prsciencetrust.org/advanced



CATALYZER RESEARCH
GRANTS PROGRAM

Subvenciones de hasta
\$70k

Ofrece financiación puente para que investigadores locales obtengan datos preliminares y aumenten sus posibilidades de conseguir fondos federales para investigación y desarrollo.

prsciencetrust.org/catalyzer-rgp



SBIR/STTR
Federal Grants

Fase I hasta **\$100k** Fase II hasta **\$200k**

Provee fondos de pareo 1 a 1 para propuestas, promoviendo y mejorando la comercialización de la investigación.

prsciencetrust.org/sbir-sttr



Puerto Rico y España

Subvención para proyectos colaborativos en innovación tecnológica

Subvenciones de hasta
\$75k/año

Facilita la selección y financiamiento de proyectos de investigación y desarrollo a través de una colaboración efectiva entre universidades y empresas puertorriqueñas y empresas españolas.

prsciencetrust.org/cdti

BEACON

BEACON es una plataforma centralizada que recopila, muestra, analiza e informa sobre todas las actividades académicas y de investigación en Puerto Rico.

prsciencetrust.org/beaconplatform



AGILE

El programa tiene como objetivo desarrollar una nueva generación de profesionales en gestión de subvenciones y administradores de investigación mediante educación, fortalecimiento de capacidades, participación comunitaria y otras actividades.

prsciencetrust.org/agile

Candid.

Es una base de datos integral de oportunidades de financiamiento, que incluye subvenciones de fundaciones, corporaciones y fuentes gubernamentales.

<https://candid.org>

¿ERES PARTE DEL SECTOR DE INVESTIGACIÓN Y DESARROLLO? CONTÁCTANOS.



@prsciencetrust1
prsciencetrust.org/research-grants-program
grants@prsciencetrust.org
 +1 (787) 523-5858



Fideicomiso para Ciencia,
Tecnología e Investigación
de Puerto Rico



RESEARCH GRANTS

funds to grow



WE EMPOWER SCIENTISTS AND RESEARCHERS TO TAKE PUERTO RICO'S KNOWLEDGE ECONOMY TO A HIGHER LEVEL OF EXCELLENCE

WHAT WE DO

The **Research Grants Program** is a structured, systematic, and open source of competitive funding mechanisms to support the development of science and technology research projects in Puerto Rico.

OUR WORK

162
research grants awarded
since its foundation

\$17M
million in
total investment

\$70M
million return
of investment

This results in a strong knowledge economy, fuels multisectoral innovation, and enables Puerto Rican scientists and entrepreneurs.

FUNDING MECHANISMS

WE EXPAND THE CAPACITY THE RESEARCH AND DEVELOPMENT ECOSYSTEM OF PUERTO RICO.



ADVANCED RESEARCH GRANTS PROGRAM

Awards up to
\$150k

Solicited funding mechanism for advancing local science and technology projects toward alternate sources of funding and/or commercialization.

prsciencetrust.org/advanced



CATALYZER RESEARCH GRANTS PROGRAM

Awards up to
\$70k

Provides bridge funding to help local researchers gather preliminary data and improve their chances of securing federal research and development grants.

prsciencetrust.org/catalyzer-rgp



SBIR/STTR Federal Grants

Phase I up to **\$100k** Phase II up to **\$200k**

Provides 1-to-1 matching funds for SBIR/STTR Phase I & II proposals, promoting and enhancing research commercialization.

prsciencetrust.org/sbir-sttr



Puerto Rico y España

Subvención para proyectos colaborativos en innovación tecnológica

Awards up to
\$75k/year

This call will facilitate the selection and funding of R&D projects through effective collaboration between a Puerto Rican entity (research center, university, or company) and a Spanish company.

prsciencetrust.org/cdti

BEACON

BEACON is a centralized platform that collects, displays, analyzes, and reports on all academic activity taking place in Puerto Rico.

prsciencetrust.org/ beaconplatform

AGILE

The program aims to develop a new generation of grants professionals and research administrators through education, capacity building, community engagement, and other activities.

prsciencetrust.org/agile

Candid.

Is a comprehensive database of funding opportunities, including grants from foundations, corporations, and government sources.

<https://candid.org>

ARE YOU IN THE RESEARCH & DEVELOPMENT SECTOR? LET'S CONNECT!



[f](https://www.facebook.com/prsciencetrust1) [in](https://www.linkedin.com/company/prsciencetrust1) [@prsciencetrust1](https://www.instagram.com/prsciencetrust1)
prsciencetrust.org/research-grants-program
grants@prsciencetrust.org
+1 (787) 523-5858



Puerto Rico
Science, Technology
& Research Trust

CONECTANDO LA CIENCIA CON LOS NEGOCIOS

¿QUIÉNES SOMOS?

La Oficina de Transferencia de Tecnología (TTO) está comprometida en convertir a Puerto Rico en un líder global de innovación. A través de nuestros recursos y asociaciones, identificamos, evaluamos, protegemos, comercializamos y transferimos los descubrimientos de investigación más prometedores de las universidades, instituciones e institutos de investigación de Puerto Rico al sector privado para su comercialización y para beneficiar al público.

¿QUÉ HACEMOS?

TTO ayuda a investigadores a llevar sus ideas y descubrimientos fuera del laboratorio y aplicarlos a la vida real, donde llegan a impactar aspectos de la vida cotidianas. La oficina también ayuda a proteger las ideas de los investigadores a través de la propiedad intelectual y sirve como puente entre los investigadores y los empresarios. Nuestro portafolio de tecnologías consiste en invenciones y propiedad intelectual de nuestros socios universitarios, abarcando descubrimientos en Ciencias Biológicas, Ciencias Físicas e Ingeniería.

Carlos A. Baez-Pagan, Associate Director TTO

NUESTRAS INICIATIVAS

XLERATOR NETWORK

Respaldo por los Institutos Nacionales de Salud (NIH), ofrece recursos para investigadores biomédicos interesados en llevar tecnologías prometedoras del laboratorio al mercado.

ENTRUST BOOTCAMP

Un bootcamp de "Laboratorio al Mercado" en Ciencias Biológicas ofrecido en colaboración con la Universidad de Columbia. El curso de 12 semanas expone a los investigadores académicos a diversos aspectos clave del desarrollo de medicamentos, diseño y comercialización.

NSF DEVELOPMENT AWARD TO TTO

El premio "Avance en Tecnologías Biotecnológicas y Prácticas de Manufactura (PR)" fue otorgado a través del programa Regional Engines de la Fundación Nacional de Ciencias (NSF) y tiene como objetivo renovar la cadena de suministro mundial de medicamentos para hacerla más confiable y basada en la demanda, como parte de la estrategia sostenible de Seguridad Nacional.



IDENTIFICAR

Descubrimientos
de investigación

Portal



EVALUAR

Análisis e
Información

Inventiones



PROTEGER

Propiedad
Intelectual

Patentas &
Derechos de Autor



MERCADO

Recursos
& Socios

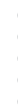
Tecnologías



TRANSFERENCIAS

Opiniones
& Licencias

Empresas emergentes
/ establecidas



¡CONECTÉMONOS PARA ACELERAR LA INVESTIGACIÓN HACIA EL ÉXITO COMERCIAL!



[@prsciencetrust1](#)

prsciencetrust.org

info@prsciencetrust.org

+1 (787) 523-5876



Fideicomiso para Ciencia,
Tecnología e Investigación
de Puerto Rico



CONNECTING SCIENCE TO BUSINESS

WHO WE ARE

The Technology Transfer Office (TTO) is helping to make Puerto Rico a global leader in innovation. Through our resources and partnerships, we identify, evaluate, protect, market, and transfer the most promising research discoveries from Puerto Rico's universities, institutions, and research institutes to the private sector for commercialization and to benefit the public.

WHAT WE DO

TTO helps researchers take their ideas and discoveries out of the lab and into the real world, where it impacts people in their everyday lives. The office also helps protect the researchers' ideas through intellectual property and serves as a bridge between researchers and entrepreneurs. Our portfolio of technologies consists of inventions and intellectual property from our university partners, reflecting discoveries in Life Sciences, Physical Sciences, and Engineering.

NUESTRAS INICIATIVAS

XLERATOR NETWORK

Supported by NIH - Offers resources for biomedical researchers interested in bringing promising technologies from the lab to the marketplace.

ENTRUST BOOTCAMP

A Life Science "Lab to Market" bootcamp offered in conjunction with Columbia University. The 12-week course exposes academic researchers to key aspects of drug development, design, and commercialization.

NSF DEVELOPMENT AWARD TO TTO

The award named "Advancing Biopharmaceutical Technologies and Manufacturing Practices (PR)" was granted through the NSF Regional Innovation Engines program and aims to help revamp the global supply chain for medicines to make it more reliable and demand-based as part of a sustainable National Security strategy.



IDENTIFY

Research Discoveries

Portal



EVALUATE

Analytics & Insights

Inventions



PROTECT

Intellectual Property

Patents & Copyrights



MARKET

Resources & Partners

Technologies



TRANSFER

Options & Licenses

Start-ups
Existing Companies



LET'S CONNECT TO ACCELERATE RESEARCH INTO COMMERCIAL SUCCESS!



   @prsciencetrust1
prsciencetrust.org
tto@prsciencetrust.org
+1 (787) 523-5876



Puerto Rico
Science, Technology
& Research Trust



EXPLORANDO EL TESORO DE LA NATURALEZA: CENTRO DE PUERTO RICO PARA LA BIODIVERSIDAD TROPICAL

NUESTRO ENFOQUE

Esfuerzos de conservación y exploración de la geografía única de Puerto Rico en busca de beneficios científicos, sociales o económicos. Desarrollo de colecciones encontradas de especímenes biológicos, la conservación de recursos de biodiversidad y la comercialización de productos derivados de la biodiversidad.

NUESTRA MISIÓN

Facilitar la investigación de alto impacto en las áreas de biodiversidad y productos naturales. Fomentar más proyectos destinados a observar y catalogar la rica biodiversidad de Puerto Rico con el objetivo de comprender cómo interactúan los organismos con su entorno, y de desarrollar productos a partir de la biodiversidad.

ESTRATEGIA Y METAS

Establecer un marco legal que proteja los recursos biodiversos y permita compartir cualquier beneficio que surja de la biodiversidad.

Crear una base de datos que permita compartir la información de biodiversidad.

Identificar iniciativas de bioprospección existentes que tengan altas posibilidades para desarrollo comercial.

Establecer nexos con esfuerzos similares en la región del Caribe.

ÁREAS DE ENFOQUE

ECOLOGÍA TROPICAL

TAXONOMÍA

MICROBIOLOGÍA

BIODIVERSIDAD

BIOPROSPECCIÓN

PRODUCTOS NATURALES

La biodiversidad tropical ha sido reconocida mundialmente como un activo valioso, con un sinnúmero de beneficios potenciales para la sociedad, tanto ambientales como educativos y económicos. En Puerto Rico se han hecho grandes esfuerzos para explorar, describir, catalogar y conservar la biodiversidad, y para fomentar el desarrollo de la "bioprospección" o identificación sistemática de sustancias en ciertos medioambientes que puedan ser útiles.

Sin embargo, es común que estos esfuerzos se lleven a cabo de manera aislada, ya que nunca ha existido una estrategia regional enfocada hacia metas en común.

¿ERES PARTE DEL SECTOR DE BIODIVERSIDAD? CONTÁCTANOS






 @prsciencetrust1
prsciencetrust.org/tropical-biodiversity/
abaerga@prsciencetrust.org
 +1 (787) 523-1592



Fideicomiso para Ciencia,
Tecnología e Investigación
de Puerto Rico



EXPLORING NATURE'S TREASURE: PUERTO RICO CENTER FOR TROPICAL BIODIVERSITY

Conservation efforts and exploration of Puerto Rico's unique geography in search of scientific, social, or economic benefits. Development of curated collections of biological specimens, the conservation of biodiversity resources, and the commercialization of biodiversity-derived products.

To facilitate high-impact research in the areas of biodiversity and natural products. To encourage more projects aimed at observing and cataloging Puerto Rico's rich biodiversity with the goal of understanding how organisms interact with their environment.

STRATEGY AND GOALS

A legal framework to protect biodiversity resources and the sharing of any benefits arising from biodiversity.
A strategy for the establishment of a searchable, curated collection of either biological specimens or environmental genomic data.

A database to enable the sharing of such information on biological/data collections.

The identification of existing bio-prospecting initiatives with high probabilities of commercial advancement.

The establishment of links with analogous efforts in the Caribbean region.

FOCUS AREAS

TROPICAL ECOLOGY
TAXONOMY
MICROBIOLOGY
BIODIVERSITY
BIOPROSPECTING
NATURAL PRODUCT CHEMISTRY

Tropical biodiversity has been recognized worldwide as a valuable asset with numerous potential benefits to Society: environmental, educational and monetary. In Puerto Rico, there have been important efforts to explore, describe, catalog and conserve biodiversity and to foster the development of "bio-prospecting", or the systematic identification of potentially useful substances in a given environment.

However, it is common that many of these efforts take place in a disconnected fashion since there has never been a regional strategy to provide focus toward common goals.

ARE YOU PART OF THE BIODIVERSITY SECTOR? CONTACT US






 @prsciencetrust1
prsciencetrust.org/tropical-biodiversity/
abaerga@prsciencetrust.org
 +1 (787) 523-1592



Puerto Rico
Science, Technology
& Research Trust



NUESTRA VISIÓN EN EL INSTITUTO DE INVESTIGACIÓN ES SERVIR COMO UN FARO DE INNOVACIÓN EN SALUD

y excelencia investigativa en Puerto Rico y más allá

¿QUÉ HACEMOS?

El **Instituto de Investigación** lidera el camino en la investigación en las biosciencias, con un énfasis en descifrar los procesos biológicos que subyacen las enfermedades que impactan a la población puertorriqueña. Nuestra misión es establecernos como un centro de innovación y excelencia en investigación, reconocido no solo dentro de Puerto Rico sino globalmente. Nuestro instituto está comprometido con un enfoque holístico, que abarca investigación, descubrimiento, educación, formación y la aplicación del conocimiento a través de una diversa gama de desafíos biomédicos. Fomentamos un ambiente donde la excelencia científica prospere, contribuyendo a una comprensión profunda de las complejidades de la vida y avanzando en las fronteras de las biosciencias.

¿CON QUIÉN CONECTAMOS?

Nuestro programa apoya a investigadores, profesionales de la salud y estudiantes (tanto locales como internacionales) dedicados a la investigación biomédica y la mejora de la salud. Fomentamos colaboraciones con hospitales, compañías biofarmacéuticas y de biomanufactura, y startups biotecnológicas para un entorno de investigación dinámico.

¿CÓMO LO HACEMOS?

Nuestro Instituto de Investigación está comprometido con el avance de las biosciencias a través de la investigación, el descubrimiento y la aplicación del conocimiento en diversos desafíos biomédicos. Nuestro enfoque valora la diversidad, reconociendo que las diferencias en educación, formación, antecedentes y perspectivas son esenciales para impulsar la innovación y el progreso en el campo de la ciencia. Nuestro instituto se encuentra en la Ciudad de la Ciencia dentro del Fideicomiso de Ciencia, Tecnología e Investigación de Puerto Rico, convirtiéndolo en un centro de colaboración multidisciplinaria. Buscamos crear un ecosistema que nutra la investigación, la educación y la formación, proporcionando un ambiente donde los científicos puedan adquirir una experiencia especializada y una comprensión amplia de las ciencias biológicas.



+28,000

Muestras de SARS-CoV-2 recogidas en nuestro biorepositorio para entender la evolución del virus.



11,000+

Completaciones de secuencias de los genomas del SARS-CoV-2 para entender mejor la pandemia de Covid-19.



6,500+

Identificación exitosa de mutaciones críticas de SARS-CoV-2 detectadas a través de la prueba ddPCR.

Establecimiento de Laboratorios Centrales, para facilitar la incorporación de nuevos investigadores y capacitados, locales y de la comunidad internacional.

Establecimiento de la Iniciativa de Vigilancia COVID-19 de Puerto Rico, siendo la 4ª jurisdicción en los EE. UU. en enviar el mayor número de secuencias de COVID-19.

¿LISTO PARA INNOVAR? CONTÁCTANOS






 @prsciencetrust1
prsciencetrust.org
info@prsciencetrust.org
 +1 (787) 523-1592



Fideicomiso para Ciencia,
Tecnología e Investigación
de Puerto Rico



NUESTRA VISIÓN EN EL INSTITUTO DE INVESTIGACIÓN ES SERVIR COMO UN FARO DE **INNOVACIÓN EN SALUD** y excelencia investigativa en Puerto Rico y más allá

WHAT WE DO

The Research Institute (RI) leads the way in advanced applied research in integrative biosciences, with a special emphasis on decoding the fundamental biological processes underlying diseases that impact the Puerto Rican population. Our ambition is to establish ourselves as a premier center of innovation and excellence in biosciences research, recognized not just within Puerto Rico but globally. Our institute is committed to a holistic approach, encompassing research, discovery, education, training, and the application of knowledge across a diverse array of biomedical challenges. We aim to foster an environment where scientific excellence thrives, contributing to a profound understanding of life's complexities and advancing the frontiers of biosciences. Through

WHO DO WE CONNECT WITH?

Our program supports researchers, healthcare professionals, and students (both local and international) dedicated to biomedical research and health improvement, fostering collaborations with hospitals, biopharmaceutical and biomanufacturing companies, and biotech startups for a dynamic research environment.

HOW WE DO IT?

We are committed to advancing integrative biosciences through pioneering research, discovery, and the application of knowledge across various biomedical challenges. Our approach values diversity, recognizing that differences in education, training, backgrounds, and perspectives are essential to driving innovation and progress in biosciences. Our institute is located at the Science City within the Puerto Rico Science, Technology, and Research Trust, making it a hub for multidisciplinary collaboration. We aim to create an ecosystem that nurtures research, education, and training, providing an environment where scientists with both specialized expertise and a broad understanding of the biological sciences can thrive. Our holistic perspective is crucial for recognizing and leveraging advancements across different fields, catalyzing breakthroughs that transcend traditional disciplinary boundaries. By uniting experts from different disciplines, we aim to create a dynamic synergy that propels forward our mission to redefine the biosciences landscape.



+28,000

SARS-CoV-2 samples recollected in our biorepository to understand the virus's evolution



11,000+

Sequence completions of the SARS-CoV-2 genomes to better understand the Covid-19 pandemic



6,500+

Successfully identified critical mutations of SARS-CoV-2 detected via the ddPCR test

Establishment of Core Laboratories, to facilitate onboarding of new researchers and trainees, local and from the international community.

Established the Puerto Rico COVID-19 Surveillance Initiative, standing as the 4th jurisdiction in the US, submitting the highest number of COVID-19 sequences.

READY TO INNOVATE? CONTACT US






 @prsciencetrust1
prsciencetrust.org
info@prsciencetrust.org
 +1 (787) 523-1592



Puerto Rico
Science, Technology
& Research Trust



Puerto Rico
Science, Technology
& Research Trust



ENTREPRENEURSHIP





¡SOMOS TU PUNTO DE PARTIDA PARA TU IDEA DE NEGOCIO!



QUÉ HACEMOS

Fase1 es un incubador de negocios que tiene como objetivo hacer el emprendimiento más accesible al talento puertorriqueño. Sin barreras de entrada, proporcionamos acceso universal a la educación empresarial e incubamos ideas que pueden transformarse en startups exitosas. A través de nuestros esfuerzos educativos, visualizamos el crecimiento de una comunidad emprendedora inclusiva y diversa que aborde las necesidades de la isla de manera innovadora, impulsando así la economía del país.

¿CÓMO FUNCIONA?

Fase1 has two components



LAB

Módulos 100 % virtuales que abarcan diversos temas sobre cómo convertir una idea en un negocio.



INTENSIVE

Nuestra incubadora incluye entrenamineto, servicio y mentoría especializada para acompañar a los empresarios en el desarrollo de su producto mínimo viable.



Our program prepares you to participate in other **entrepreneurship programs** of the PRSTRT, so you can lead a successful journey in the business ecosystem.



¿PARA QUIÉN ES FASE1?



¡PARA TODOS!

Nuestro programa está diseñado para que cualquier persona que desee convertirse en emprendedor pueda lograrlo con éxito.

¿LISTO PARA EMPEZAR? CONTÁCTANOS

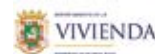


fase1.org
f @ @fase1org
787-523-1592
fase1@prsciencetrust.org



Fideicomiso para Ciencia, Tecnología e Investigación de Puerto Rico

A program funded by:





WE ARE THE STARTING POINT FOR YOUR BUSINESS IDEA!



WHAT WE DO

Fase1 is an **early-stage business incubator** dedicated to making entrepreneurship more accessible to Puerto Rican talent. We provide entrepreneurial content and nurture ideas that can evolve into successful startups. Through our educational initiatives, we aim to cultivate an **inclusive and diverse entrepreneurial community**, addressing the island's needs with innovative solutions and driving economic growth.

HOW IT WORKS?

Fase1 has two components



LAB

100% virtual modules covering various topics on how to turn an idea into a business.



INTENSIVE

A 12-week business incubator that offers a hybrid (in-person & virtual) specialized curriculum aimed to transform 50 ideas into new startups every year, while facilitating their access to subsequent programs in the entrepreneurial journey such as pre-accelerators like pre18.

Our program prepares you to participate in other **entrepreneurship programs** of the PRSTRT, so you can lead a successful journey in the business ecosystem.



WHO IS FASE1 FOR?



FOR EVERYONE!

Our program is designed so that anyone that wants to be an entrepreneur can achieve it successfully.

READY TO START? CONTACT US



fase1.org
f @ @fase1org
787-523-1592
fase1@prsciencetrust.org



Puerto Rico Science, Technology & Research Trust

A program funded by:



CONECTAMOS A EMPRENDEDORES CON EL RECURSO ADECUADO, EN EL MOMENTO INDICADO.



Colmena66 facilita el emprendimiento en Puerto Rico al conectar a las personas que emprenden con el recurso adecuado en el momento indicado, según la necesidad o etapa de desarrollo de su negocio. Es la única organización en la isla que trabaja con todo tipo de empresas en cualquier etapa.

En Colmena66 se analizan las brechas en el ecosistema y se trabaja junto a la Red de Apoyo Empresarial para fortalecer la comunidad. Como constructores de ecosistemas, Colmena66 crea la infraestructura que apoya a emprendedores y provee puntos de acceso para que cualquiera pueda participar, crecer y prosperar.

NUESTRO IMPACTO EN LA COMUNIDAD



220+
recursos en la Red de Apoyo Empresarial



20,700+
personas impactadas desde 2016



44,309
referidos al recurso adecuado en el momento indicado

RESULTADOS LUEGO DE COLMENA66



34%
indicó que tomó la decisión de emprender luego de contactarnos

(Según la Encuesta Anual de Emprendimiento 2024)



14.3%
indicó que logró abrir un negocio

(Según la Encuesta Anual de Emprendimiento 2024)

AYUDAMOS A LA COMUNIDAD MEDIANTE



Línea de Apoyo Empresarial



Calendario Empresarial



Directorio de Recursos



Convocatorias Empresariales



Contenido Educativo



Mapa Tu Camino Empresarial

¡COMIENZA TU CAMINO EMPRESARIAL!



¡Añade miel a tu buzón!
Suscríbete a nuestro Boletín Empresarial.



(787) 525-4111



colmena66.com



info@colmena66.com



Fideicomiso para Ciencia, Tecnología e Investigación de Puerto Rico

WE CONNECT ENTREPRENEURS WITH THE RIGHT RESOURCE AT THE RIGHT TIME.



Colmena66 facilitates entrepreneurship in Puerto Rico by connecting entrepreneurs with the right resources at the right time, tailored to the specific needs and stage of their business. It is the only organization on the island that works with all types of businesses at any stage.

Colmena66 analyzes the gaps in the ecosystem and works together with the members of the Resource Network to strengthen the community. As ecosystem builders, Colmena66 creates the infrastructure that supports entrepreneurs and provides access points for anyone to participate, grow and thrive.

OUR IMPACT IN NUMBERS



220+

resources in the Resource Network



20,700+

entrepreneurs impacted since 2016



44,309

referrals to the right resource at the right time

RESULTS AFTER COLMENA66



34%

decided to start a business after contacting Colmena66

(According to the 2024 Annual Entrepreneurship Survey)



14.3%

indicated that they opened a business

(According to the 2024 Annual Entrepreneurship Survey)

OUR RESOURCES FOR THE COMMUNITY



Business Assistance Hotline



Entrepreneurial Calendar



Resource Navigator



Opportunities for Entrepreneurs



Educational Content



Tu Camino Empresarial Map

START YOUR ENTREPRENEURIAL JOURNEY!



Add Some Honey To Your Inbox!

Subscribe to our newsletter.



(787) 525-4111



colmena66.com



info@colmena66.com



Puerto Rico Science, Technology & Research Trust

440+
startups

45+
países

\$15M (USD)
capital invertido

¡TE LLEVAMOS A DONDE QUIERES LLEGAR!

¿QUIÉNES SOMOS?

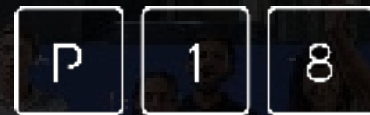
Parallel18 es un centro internacional de innovación de alto nivel, orientado al desempeño, que se enfoca en proporcionar financiamiento, mentoría, conexiones comerciales e inversión a fundadores subrepresentados de todo el mundo.



Un programa de pre-aceleración de tres meses para boricuas en donde los ayudamos a llegar a nuevos mercados.

BioLeap

Un programa de incubación de tres meses para aumentar el desarrollo económico a través de la innovación y el emprendimiento en el sector de las ciencias de la vida.



Un programa de aceleración de 5 meses en donde ayudamos a empresarios internacionales a escalar a nuevos mercados.

xpand

Un programa de posaceleración de 30 semanas para empresas puertorriqueñas en etapa de crecimiento.

¿QUÉ OFRECEMOS?



Capacitación
y mentoría



Metodología para
medir crecimiento



\$25k
en subvención
para pre18ners



\$40k
en subvención
para P18ners



Acceso a sobre 600
inversionistas activos



Conexiones con sobre
75 socios corporativos

REQUISITOS:



Empresas innovadoras con
tres años de operaciones o
menos (pre18/P18)



Empresas con potencial
de expansión global.



Equipo comprometido a
tiempo completo con su
empresa.

PARA MÁS INFORMACIÓN:
www.parallel18.com

@parallel18startups



Fideicomiso para Ciencia,
Tecnología e Investigación
de Puerto Rico

WHERE YOUR STARTUP NEEDS TO GO!

WHAT ARE WE?

Parallel18 is an entrepreneurial center that offers startup founders from all over the world access to high-quality business training, grants, mentorship, connections and investment opportunities to help them scale globally.



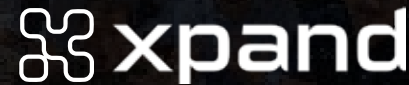
By Puerto Ricans for Puerto Ricans! This pre-acceleration program helps early-stage companies from the island to upscale into global markets.



Life Science & STEM incubation program that bridges the gap between research and commercialization.



Our acceleration program welcomes companies from around the world to help them scale in a curriculum-based structure.



An entrepreneurial program designed to support growth-stage companies in Puerto Rico by providing business resources that can potentiate sustainable expansion into new markets.

WHAT WE OFFER:



Training and mentorship



Methodology to track growth



\$25k equity-free for pre18ners.



\$40k equity-free for P18ners.



Access to 600+ active investor network



Access to 75+ Corporate Partners

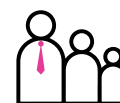
WHAT WE ASK:



innovative startups with three years of experience or less (pre18/P18).



Companies that can scale globally.



Fully-committed teams ready to take it to the next level.

WANT TO LEARN MORE?

www.parallel18.com

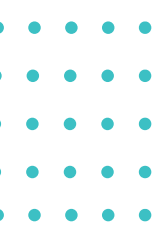
@parallel18startups



Puerto Rico Science, Technology & Research Trust



Puerto Rico
Science, Technology
& Research Trust



PUBLIC HEALTH





ESTABLECIDO EN 2019, SERVIMOS COMO INSTITUTO DE SALUD PÚBLICA PARA PUERTO RICO CON EL PROPÓSITO DE PROMOVER PRÁCTICAS DE SALUD PÚBLICA INNOVADORAS E INFORMADAS EN EVIDENCIA, PARA LOGRAR MEJORAS SISTEMÁTICAS Y APOYAR DE MANERA SOSTENIBLE LA SALUD DE LOS RESIDENTES.



GABRIELA A. ALGARÍN ZAYAS, MPH, EDD
Directora de División Enlace Comunitario

MARIANGELLYS RODRÍGUEZ, PHD, PMP
Directora Asociada, Estrategia de Operaciones

MARIELA ALVARADO ORTIZ, DRPH, MPH
Gerente de División Epidemiología y Evaluación

LESLIE MAAS-CORTÉS, MHS
Directora de División Tecnología en Salud y Preparación ante Emergencias

DIRECTORA EJECUTIVA

MARIANYOLY ORTIZ, PHD, BCE

¿QUIÉNES SOMOS? El Instituto de Salud Pública de Puerto Rico (PRPHI, por sus siglas en inglés), establecido en 2019, es un programa del Fideicomiso para Ciencia, Tecnología e Investigación de Puerto Rico. Servimos como un instituto de salud pública sin fines de lucro para todo el archipiélago.



División
Enlace
Comunitario

Colabora con líderes comunitarios y residentes para la co-creación de proyectos que promuevan estilos de vida saludables y manejo de enfermedades.



División
Tecnología en salud y preparación
ante emergencias

Promueve la Telesalud y comunidades de aprendizaje (ECHO®) para mejorar la atención médica, e impulsa la investigación participativa comunitaria en preparación y respuesta ante emergencias.



División
Epidemiología
y Evaluación

Ofrece asistencia técnica y educación en salud pública. Realiza análisis de datos y evaluación de proyectos para fortalecer decisiones informadas en evidencia.

MISIÓN: Mejorar la salud pública de Puerto Rico mediante intervenciones informadas en evidencia, trabajando de la mano con las comunidades y facilitando colaboraciones intersectoriales.

VISIÓN: Un Puerto Rico saludable impulsado por un ecosistema colaborativo de salud.

PRIORIDADES: Enfermedades Crónicas • Salud Digital • Emergencias y Desastres • Salud Rural • Salud Mental

¡CONÉCTATE CON NOSOTROS!



paralasaludpublica.org
@InstitutoSaludPublica
info@prphi.org



Fideicomiso para Ciencia,
Tecnología e Investigación
de Puerto Rico



ESTABLISHED IN 2019, WE SERVE AS THE PUERTO RICO PUBLIC HEALTH INSTITUTE WITH THE PURPOSE OF PROMOTING INNOVATIVE, EVIDENCE-INFORMED PUBLIC HEALTH PRACTICES TO ACHIEVE SYSTEMATIC IMPROVEMENTS AND SUSTAINABLY SUPPORT THE HEALTH OF RESIDENTS.



WHO WE ARE The Puerto Rico Public Health Institute (PRPHI), established in 2019, is a program of the Puerto Rico Science, Technology and Research Trust. We serve as a private nonprofit, public health institute for the archipelago.



Community Engagement Division

Collaborates with community leaders and residents to co-create projects that promote healthy lifestyles and disease management.



Health Technology and Emergency Preparedness Division

Promotes Telehealth and learning communities (ECHO®) to improve healthcare, and fosters community-based participatory research in emergency preparedness and response.



Epidemiology and Evaluation Division

Provides technical assistance and public health education. Conducts data analysis and project evaluation to strengthen evidence-informed decision-making.

MISSION: Improving Puerto Rico’s public health through evidence-informed interventions, working hand in hand with communities, and facilitating intersectoral collaborations.

VISION: A healthy Puerto Rico powered by a collaborative health ecosystem.

PRIORITIES: Chronic Diseases • Digital Health • Emergencies and Disasters • Rural Health • Mental Health

CONNECT WITH US!



paralasaludpublica.org
@InstitutoSaludPublica
info@prphi.org



Puerto Rico Science, Technology & Research Trust



IMPULSANDO LA INVESTIGACIÓN CLÍNICA INNOVADORA EN PUERTO RICO

¿QUIÉNES SOMOS?

Creado en el 2016, como una organización sin fines de lucro, el Consorcio de Investigación Clínica de Puerto Rico (PRCCI, por sus siglas en inglés), ha creado y desarrollado la red más grande de centros de investigación clínica, académica y privada de primer nivel de Puerto Rico.

NUEVO CENTRO DE INVESTIGACIÓN CLÍNICA

Recientemente el Consorcio inauguró su Centro de Investigación Clínica vanguardista, reforzando así nuestro compromiso con el avance de las capacidades de la salud en un escenario que está en constante evolución. Alineado con la recomendación de la FDA de aumentar la diversidad en los ensayos clínicos, PRCCI está avanzando este esfuerzo. Las empresas en Estados Unidos ahora pueden aprovechar la diversa población de Puerto Rico para ensayos inclusivos. Nuestra nueva instalación cuenta con tecnologías modernas y personal dedicado de expertos, listo para brindar un apoyo constante a las investigaciones clínicas.

VISIÓN

Ser el colaborador preferido para la implementación de ensayos clínicos en hispanos.

¿POR QUÉ ESCOGERNOS?

- ✓ Infraestructura moderna
- ✓ Equipo de vanguardia
- ✓ Personal experto
- ✓ Cumplimiento con Regulaciones de FDA
- ✓ Localizado estratégicamente cerca de universidades y hospitales

SOLUCIONES QUE OFRECEMOS:

- RED DE ENSAYOS CLÍNICOS
- FORMACIÓN EN INVESTIGACIÓN CLÍNICA
- CENTRO DE INVESTIGACIÓN CLÍNICA
- ALCANCE COMUNITARIO Y ENLACE CON PACIENTES
- ORGANIZACIÓN DE INVESTIGACIÓN POR CONTRATO (CRO)

ALGUNAS DE LAS ÁREAS TERAPÉUTICAS QUE ATENDEMOS:
 ONCOLOGÍA/HEMATOLOGÍA · ENFERMEDADES RESPIRATORIAS ·
 DERMATOLOGÍA · VACUNAS · REUMATOLOGÍA · PSICQUIATRÍA ·
 NEUROLOGÍA · ENFERMEDADES INFECCIOSAS · INFLAMACIÓN

600+

**VIDAS
IMPACTADAS**

100+

**ENSAYOS CLÍNICOS
REALIZADOS**

20+

**CENTROS DE
INVESTIGACIÓN**

90+

**INVESTIGACIONES
CLÍNICAS**

EXPLORA LAS POSIBILIDADES INFINITAS CON PRCCI



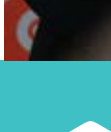
 @prccinews
www.prci.org
contact@prcci.org
 +1 (787) 523-5876



DRA. AMARILYS SILVA-BOSCHETTI
DIRECTORA



Fideicomiso para Ciencia,
Tecnología e Investigación
de Puerto Rico



Fideicomiso para Ciencia,
Tecnología e Investigación
de Puerto Rico



THE GATEWAY TO CUTTING-EDGE CLINICAL RESEARCH IN PUERTO RICO!

WHO WE ARE

Established in 2016 as a non-profit organization, the Puerto Rico Consortium for Clinical Investigation (PRCCI) has created and developed the largest network of top clinical, academic and private research sites in Puerto Rico.

PRCCI CLINICAL RESEARCH CENTER

PRCCI recently launched its state-of-the-art Clinical Research Center, reinforcing our commitment to advancing capabilities within the ever-evolving healthcare landscape. In line with the FDA's recommendation to enhance diversity in clinical trials, PRCCI is at the forefront of this effort. Companies in the US can now tap into Puerto Rico's diverse population for inclusive trials. Our new facility features cutting-edge technologies, with a dedicated team of experts poised to provide unwavering support for investigations.

VISION

Become the preferred partner for the implementation of clinical trials in Hispanics.

WHY CHOOSE PRCCI?

- ✓ Modern Infrastructure
- ✓ State-of-the-Art Equipment
- ✓ Expert Staff
- ✓ FDA Regulatory Compliance
- ✓ Strategically located near major academic and hospital institutions

PRCCI SOLUTIONS:

- CLINICAL TRIAL NETWORK
- CLINICAL RESEARCH TRAINING
- CLINICAL RESEARCH CENTER
- COMMUNITY OUTREACH & PATIENT ENGAGEMENT
- CONTRACT RESEARCH ORG (CRO)

SOME OF THE THERAPEUTIC AREAS WE SERVE:

ONCOLOGY/HEMATOLOGY - RESPIRATORY DISEASES -
DERMATOLOGY - VACCINES - RHEUMATOLOGY - PSYCHIATRY -
NEUROLOGY - INFECTIOUS DISEASES - INFLAMMATION

600+

PATIENT LIVES IMPACTED

100+

CLINICAL TRIALS CONDUCTED

20+

CLINICAL RESEARCH SITES

90+

CLINICAL RESEARCH INVESTIGATIONS



EXPLORE THE ENDLESS POSSIBILITIES WITH PRCCI






 @prccinews
www.prcci.org
contact@prcci.org
 +1 (787) 523-5876



Puerto Rico
Science, Technology
& Research Trust



Unidad de Control de
Vectores de Puerto Rico



ASPIRANDO A UN PUERTO RICO LIBRE DE VIRUS TRANSMITIDOS POR MOSQUITOS.

¿QUIÉNES SOMOS?

La Unidad de Control de Vectores de Puerto Rico (la "Unidad") es una iniciativa de la organización sin fines de lucro privada el Fideicomiso para Ciencia, Tecnología e Investigación de Puerto Rico. La Unidad fue establecida para reforzar las capacidades de Puerto Rico para controlar el mosquito *Aedes aegypti*, el vector que transmite las enfermedades del zika, chikungunya y dengue en Puerto Rico.

NUESTRA MISIÓN:

Nuestra misión es proteger al pueblo de Puerto Rico del mosquito *Aedes aegypti*, a la vez de educar y empoderar a los ciudadanos de la Isla para lograr reducir dramática y sosteniblemente la población de mosquitos en todo Puerto Rico.

¿QUÉ HACEMOS?

La Unidad de Control de Vectores de Puerto Rico tiene tres iniciativas principales que forman el Programa de Manejo Integrado de Vectores:

MONITOREO Y VIGILANCIA



La Unidad cuenta con un laboratorio con la capacidad para monitorear la presencia y abundancia de los mosquitos *Aedes aegypti* a través de la Isla.

950+

Trampas de Vigilancia

+630,000

Mosquitos *Aedes aegypti*
hembras capturados

MOVILIZACIÓN COMUNITARIA



Trabajamos para educar y empoderar a los residentes y visitantes de Puerto Rico a tomar un rol directo y significativo en el control de los mosquitos *Aedes aegypti*.

Sobre más de

150 ACTIVIDADES

7,000+ **4,000+**

Material Educativo
Distribuido

Repelentes
Distribuidos

CONTROL DE VECTORES



La Unidad trabaja en colaboración cercana con agencias gubernamentales para fortalecer programas de control de mosquitos.

4,000+

Trampas de Control Instaladas



PRVCU Unidad de Control de
Vectores de Puerto Rico
INTERNACIONAL



Asociación para el Manejo
de Vectores de Puerto Rico



TROPICAL ISLANDS
TRAINING & EVALUATION CENTER

¡CONÉCTATE CON NOSOTROS!



www.prvectorcontrol.org
info@prvectorcontrol.org

[f](#) [in](#) [@](#) /PRVectorControl

San Juan T:787-523-5860
Ponce T:787-671-3348



Fideicomiso para Ciencia,
Tecnología e Investigación
de Puerto Rico



Puerto Rico Vector Control Unit

Striving together for a Puerto Rico free from mosquito-borne disease.

WHO WE ARE?

The Puerto Rico Vector Control Unit (PRVCU) is an initiative of the private non-profit organization the Puerto Rico Science, Technology, and Research Trust. The PRVCU was established to leverage Puerto Rico's capacity to control the *Aedes aegypti* mosquito, the vector for the diseases Zika, chikungunya, and dengue in Puerto Rico.

The PRVCU focuses on strengthening the capacity for vector control in Puerto Rico as well as implementing vector surveillance, creating innovative information systems, carrying out vector control operations, and boosting community engagement through citizen mobilization and education programs.

OUR MISSION:

Protect the people of Puerto Rico from the *Aedes aegypti* mosquito, while educating and empowering everyone to dramatically and sustainably reduce mosquito populations across Puerto Rico.



WHAT WE DO?

The Puerto Rico Vector Control Unit has three main initiatives that form the Integrated Vector Management Program:

MONITORING & SURVEILLANCE



The Unit has the laboratory capacity to monitor the presence and abundance of *Aedes aegypti* mosquitoes across the Island.

950+

Surveillance Traps

+630,000

Aedes aegypti Female Captured

COMMUNITY MOBILIZATION



The Community Mobilization core works to educate and empower all residents and visitors to play a direct and meaningful role in the control of *Aedes aegypti* mosquitoes.

More than

150 ACTIVITIES

7,000+ **4,000+**

Educational Materials

Repellents

VECTOR CONTROL



The Unit works in close collaboration with government agencies and municipalities to strengthen mosquito control programs.

4,000+

Control Traps



PRVCU Puerto Rico Vector Control Unit INTERNATIONAL



Puerto Rico Vector Management Association



TROPICAL ISLANDS TRAINING & EVALUATION CENTER

CONNECT WITH US!



www.prvectorcontrol.org
info@prvectorcontrol.org

[f](#) [in](#) [@](#) /PRVectorControl

San Juan T: 787-523-5860
Ponce T: 787-671-3348



Puerto Rico Science, Technology & Research Trust



Puerto Rico
Science, Technology
& Research Trust

EDUCATION





FOMENTANDO EL APRENDIZAJE Y EL FUTURO A TRAVÉS DE LA EDUCACIÓN STEM

Y DESARROLLO DE LA FUERZA LABORAL

¿QUIÉNES SOMOS?

El programa de Educación STEM y Desarrollo de la Fuerza Laboral en Puerto Rico se enfoca en mejorar la educación STEM en los grados académicos de K-12 y en el desarrollo de destrezas relacionadas a tecnologías emergentes. Nuestro objetivo es promover el conocimiento tecnológico desde una edad temprana y asegurar que las personas logren una transición fluida y exitosa de la escuela al mundo laboral. El propósito principal es fomentar la participación de Puerto Rico en la economía tecnológica global.

NUESTRO ENFOQUE

Servimos a estudiantes, profesores, profesionales y actores claves en el sector educativo, alineando nuestros esfuerzos con las necesidades y objetivos de las comunidades de tecnología y educación. Nuestro programa colabora activamente con líderes, agencias gubernamentales e instituciones académicas.

NUESTRAS INICIATIVAS

*A través de un enfoque dual basado en **experiencias educativas y capacitación especializada** de la fuerza laboral, cultivamos destrezas tecnológicas que se adaptan a un mundo en constante evolución.*

DESARROLLO DE LA FUERZA LABORAL

Adiestra a las personas con las competencias necesarias en el campo laboral actual. Algunas de las iniciativas: PR Ready, Smart Island y Certificación a maestros en STEM+IA.



Busca impulsar el futuro tecnológico de la juventud puertorriqueña en la biotecnología, tecnología informática y tecnologías emergentes al establecer un TecLab Club en cada escuela superior de la Isla diseñados para fomentar el interés de los/as estudiantes de 9no a 12mo grado en carreras del campo de la ciencia y tecnología.

Premio **Azmat A. Assur** para Futuros Académicos




Otorga \$20,000 a estudiantes destacados de escuelas públicas en Puerto Rico, con el propósito de apoyar sus estudios en ciencia, tecnología, ingeniería o matemáticas y su contribución al futuro.



Un espacio orientado a la educación, innovación y acceso a tecnologías de impresión 3D ubicado en Ponce. Talleres y consultoría disponible a través de membresías.

¡CONECTEMOS PARA AVANZAR EN LA EDUCACIÓN STEM Y EL DESARROLLO DE LA FUERZA LABORAL!






 @prsciencetrust1
prsciencetrust.org/stem-and-worforce
facebook.com/groups/stemeducationprogram
stem@prsciencetrust.org
 +1 (787) 523-1592



Fideicomiso para Ciencia,
Tecnología e Investigación
de Puerto Rico



EMPOWERING LEARNERS BY SHAPING THE FUTURE OF STEM THROUGH EDUCATION AND INNOVATIVE WORKFORCE DEVELOPMENT

WHO WE ARE?

The STEM Education & Workforce Development program in Puerto Rico focuses on improving K-12 STEM education and developing skills in emerging technologies. It aims to promote technology literacy from an early age and ensure a smooth transition from education to employment. The ultimate objective is to enable Puerto Rico's active involvement in the global tech economy.

OUR FOCUS

We serve students, teachers, professionals, and key stakeholders in the education sector, aligning its efforts with the needs and objectives of the wider technology and education communities. Our program actively collaborates with industry leaders, government agencies, and academic institutions.

OUR INITIATIVES

*Through a dual approach based on **educational experiences and specialized workforce training**, we cultivate technological skills for an evolving landscape.*

WORKFORCE DEVELOPMENT

Focuses on equipping individuals with the skills and competencies required in today's labor market. Key initiatives include PR Ready, Smart Island, and STEM + AI teacher certification programs.



Seeks to empower the technological future of Puerto Rican youth within the fields of biotechnology, information technology, and emerging technologies by establishing TecLab Clubs in high schools across the Island. These clubs are designed to foster interest among students in grades 9 through 12 in careers in science and technology.

Premio **Azmat A. Assur** para Futuros Académicos

Provides \$20,000 scholarships to outstanding students from public schools in Puerto Rico to support their studies in science, technology, engineering, or mathematics and their contributions to the future.



A space dedicated to education, innovation, and access to 3D printing technologies, located in Ponce. Workshops and consulting services are available through memberships.

CONNECT WITH US TO ADVANCE STEM EDUCATION AND WORKFORCE DEVELOPMENT!




 @prsciencetrust1
prsciencetrust.org/stem-and-worforce
facebook.com/groups/stemeducationprogram
stem@prsciencetrust.org
 +1 (787) 523-1592



Puerto Rico
Science, Technology
& Research Trust

INFRASTRUCTURE



Puerto Rico
Science, Technology
& Research Trust

Science City

A GLOBAL CENTER FOR MULTIDISCIPLINARY COLLABORATION FOR INNOVATION IN PUERTO RICO

Is an innovation center that follows global standards that connects different ecosystems in Puerto Rico to promote innovation.

The project is located in San Juan, extending over 69 acres of land and comprised of several state-of-the-art buildings. It currently has a high-tech scientific research complex with advanced laboratories, business incubator spaces, conference center and offices.



New collaborative center for the acceleration of companies in fields such as science, technology and manufacturing.



Headquarters that houses offices, a Clinical Research Institute and co-working spaces.



ENVIRONMENTAL RESEARCH LABORATORY

It provides scientific and laboratory support to PREQB and other government agencies.

DISCOVER MORE ABOUT SCIENCE CITY AND OUR MISSION

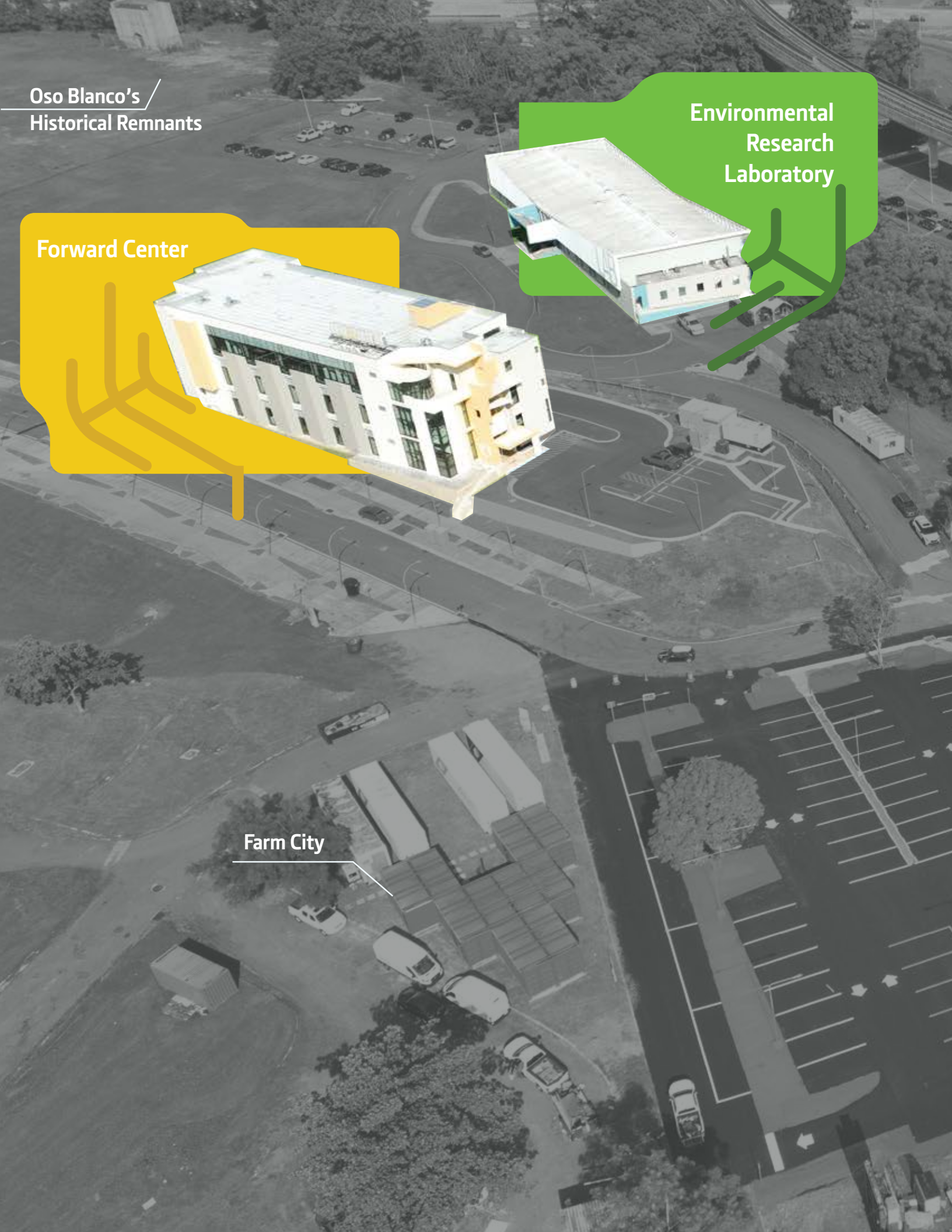
[f](#) [in](#) [@](#) [X](#) @prsciencetrust1
info@prsciencetrust.org
+1 (787) 523-1592

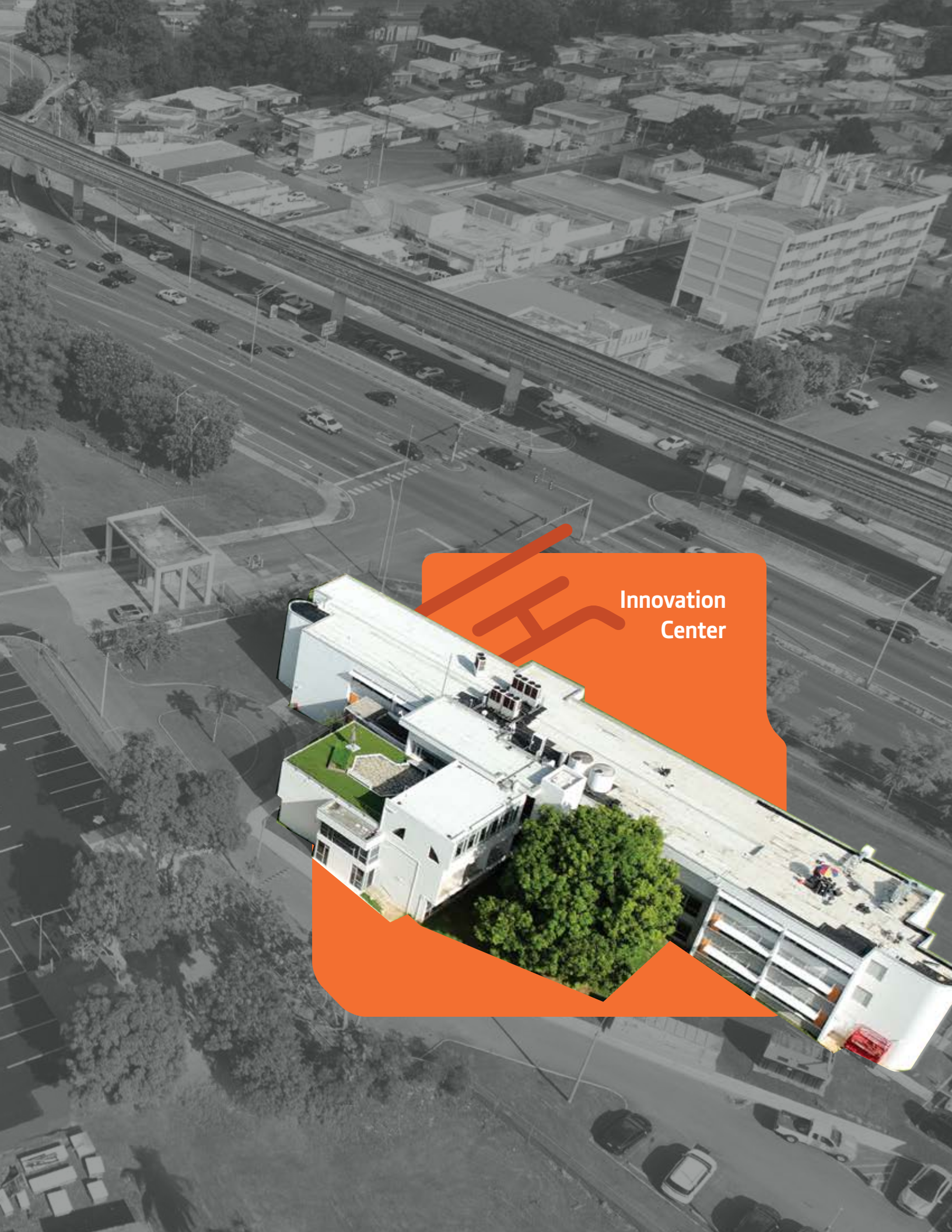
Oso Blanco's
Historical Remnants

Environmental
Research
Laboratory

Forward Center

Farm City








Innovation
Center



Puerto Rico
Science, Technology
& Research Trust

www.prsciencetrust.org

PO Box 363475 San Juan,
PR 00936-3475

    @prsciencetrust1

info@prsciencetrust.org

+1.787. 523.1592

